

# Georgia Pathways Magazine

---

Media Kit



**TAG-Ed**  
Education Collaborative

# ARTICLE SUBMISSION PACKAGES

## Submission Requirements

- Word.doc / 1,500+ Word Count
- Completely proofed
- Title, Author, Short bio
- Images as attachments / .jpeg, .pdf, .png
- Image resolution: 300 dpi
- Deadline: 1st of each month
- Send to [tag-ed@tagonline.org](mailto:tag-ed@tagonline.org)

## Sponsor Now

For assistance with sponsorship, please contact us at [tag-ed@tagonline.org](mailto:tag-ed@tagonline.org)

### TWO PAGE FEATURE ARTICLE CENTER SPREAD

\$2500

- Full page ad included
- Hyperlink and embedded video capability
- Article title on cover
- Inclusion of programs, events, state initiatives, and efforts of note

### TWO PAGE SPREAD ARTICLE

\$2000

- Interior location
- Hyperlink capability

### ONE PAGE ARTICLE

\$1000

- Interior location
- Hyperlink capability



## Advertising Page Specs

- Full page advertisements only
- Vertical 8.5 x 11 (1/8" bleed)
- Full color
- Resolution: 300 DPI
- File type: JPEG, PDF, PNG, hyperlink capability available
- Embedded video available (YouTube code)

## Advertise Now

For assistance with advertising,  
please contact us at  
[tag-ed@tagonline.org](mailto:tag-ed@tagonline.org)

# STANDARD ADVERTISING

## Full Page Advertisements Only

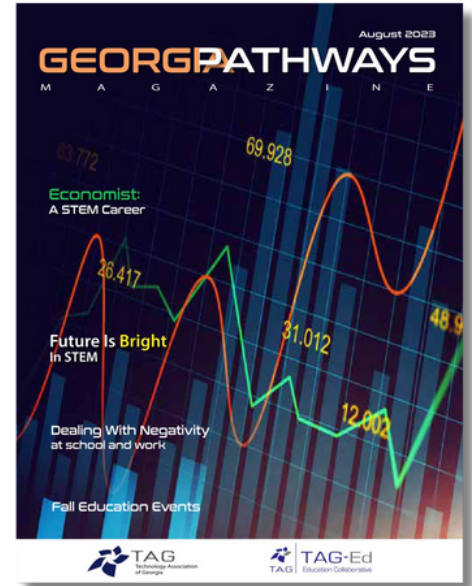
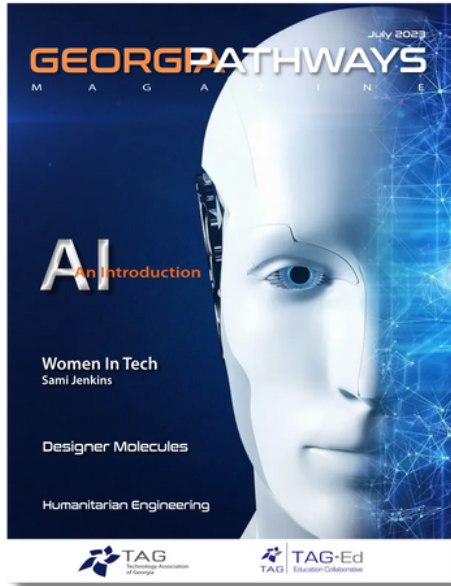
Front Cover: \$950

Inside Front cover: \$550

Back Cover: \$375

Resource Page: \$50 / Issue

# ABOUT GEORGIA PATHWAYS MAGAZINE



As of October 2023:

Georgia Pathways Magazine is read monthly by over 62,000 people state-wide.

68%

Educators, K-12 Students, Parents, and School Administrators

8%

University professors and their students

16%

Industry professionals in a variety of fields, including: aerospace, auto, professional post-graduate institutions, military, and government entities

8%

Other interested individuals

**A variety of opportunities are available to you  
to share your meaningful message across  
Georgia monthly, from article submissions to  
interactive ad placement and sponsorships**

For assistance with sponsorship,  
advertising, or other inquiries  
please contact us at  
[tag-ed@tagonline.org](mailto:tag-ed>tagonline.org)